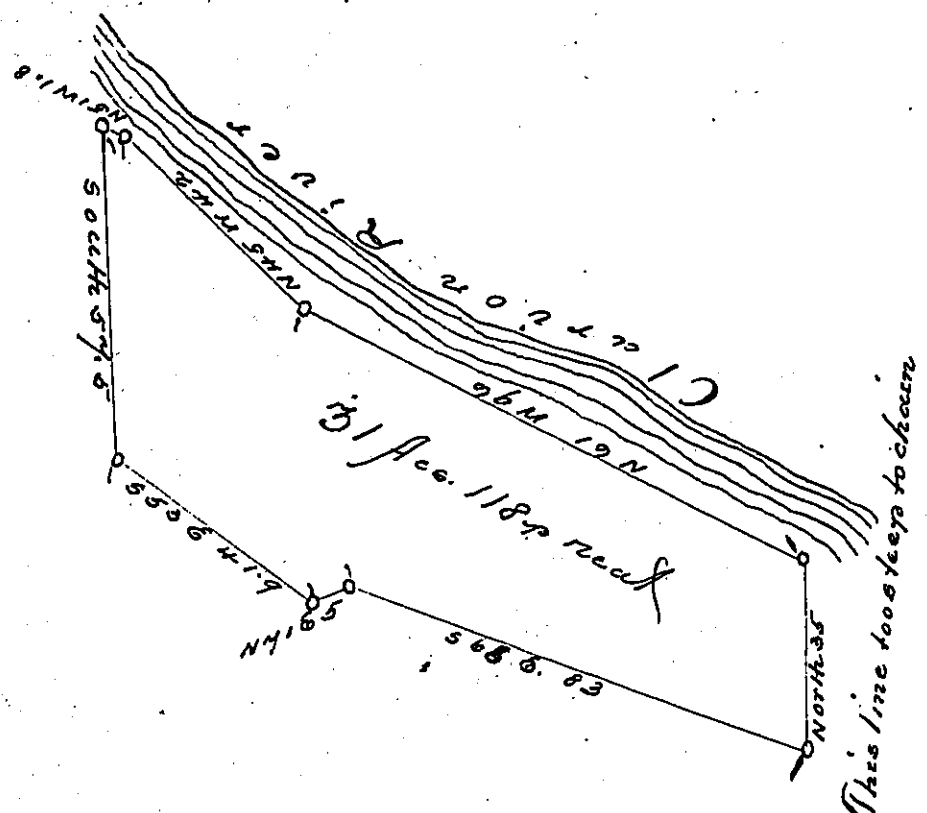


Course	D.	N.	S.	E.	W.
South	57.5		57.50		
S 53.6 E	41.9		25.17	32.44	
N 41.6 E	5	1.63		4.43	
S 68.6 E	83		31.09	76.96	
North	35	35.00			
N 61 W	96	46.44			83.96
N 45 W	42	29.60		<del>29.20</del>	29.70
N 51 W	1.8	1.09			1.44
		113.76	113.76	115.13	115.13



The above is a survey which I made in pursuance of a Warrant directed to me for J. B. Reynolds & George Krebs and sent the return to your office. I have reexamined it, and found that it was not correct, the above is nearly correct. (This and the Laughlin survey are very steep and rocky and difficult to measure correctly.)

Yours with respect &c.  
 Jesse Scott

IN TESTIMONY that the above is a copy of the original remaining on file in the Department of Internal Affairs of Pennsylvania, made conformably to an Act of Assembly approved the 16th day of February, 1833, I have hereunto set my Hand and caused the Seal of said Department to be affixed at Harrisburg, this second day of January, 1900,

*James W. Fatta*  
 Secretary of Internal Affairs.